

AUTOMATIC SEWING SYSTEMS

AUTOMATIC TOE CLOSER FOR KNEE-HIGHS
AND STOCKINGS

TC10



AUTOMATIC SEWING SYSTEMS

TC 10

Automatic Toe Closer for knee-highs and stockings. The simplicity of operation facilitates the installation and the use of the machine, enhances reliability and reduces operation and maintenance costs.

"Santoni Toe Closer" offers a great flexibility with the possibility to shape the toe of a wide range of products (from small women's socks to large single legs of pantyhose).

Machine can be equipped with optional kits like the heel/ toe positioning device and the body slitting device and it is also designed for the connection with the automatic loader P&P-SG.

AUTOMATIC SEWING SYSTEMS

TC 10

Specification	Value
Air pressure	6 bar
Air consumption	200 NI/min
Installed power	3 Kw
Avg. Cycle time	2 Sec.
Size	75 Dz/hr (pair)

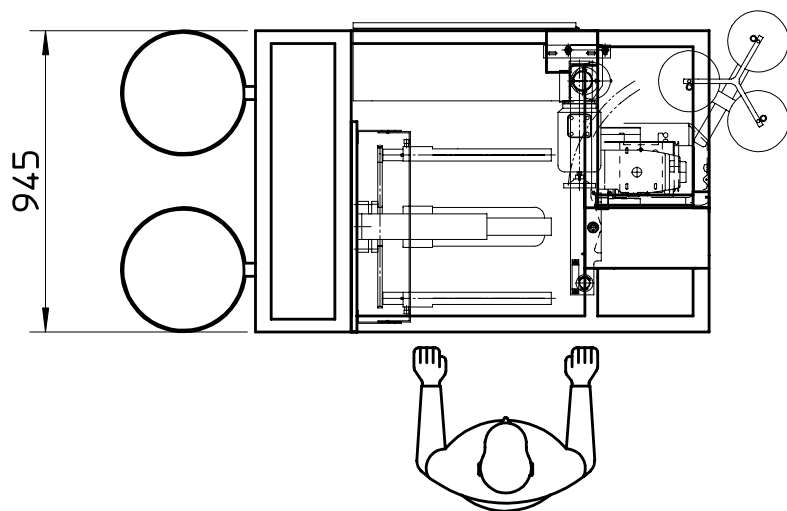
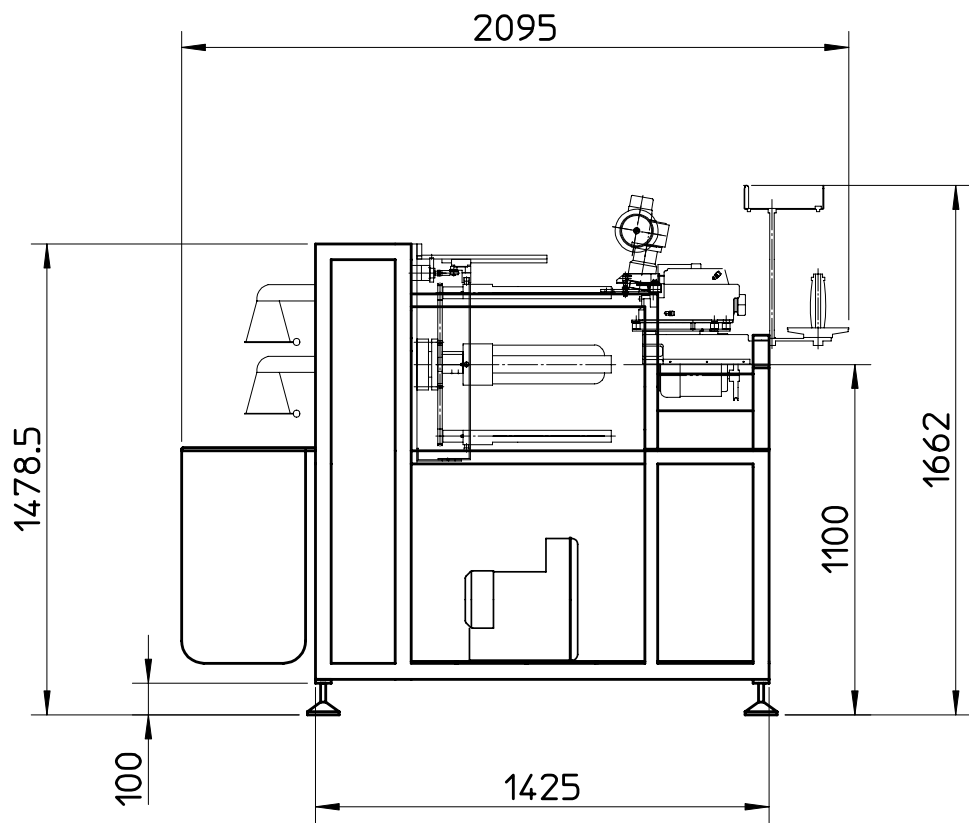
Features
PLC for the electronic control of all main functions of the seaming cycle
Electronic self-diagnosis with visualized errors or malfunctions
Touch-screen display for the machine setting with possibility to store different sewing programs
Qty. 10 sewing tubes with interchangeable blades
Toe shaping by means of a toothed belt with adjustable profile

Optionals
Sewing head with twin needles
Toe positioning kit with color detector
Double unloading bag with switching valve
Possibility to use a Pick & Place for the automatic loading
Heel/toe positioning kit
Slitting device

DISCLAIMER:

Technical data given in this brochure are for information only. Santoni S.p.A. reserves the right to modify the machine features without forewarning and without the obligation to apply any modification to the machines already installed. Pictures are exemplifying and have not to be regarded as a reference.

Santoni is recommending needles from
GROZ-BECKERT®





SANTONI SPA

Via Carlo Fenzi, 14 - 25135 Brescia - Italy
Tel. +39 030 37671 Fax +39 030 3767400
P.IVA e CF: IT 00273280172
info.santoni@santoni.com - www.santoni.com